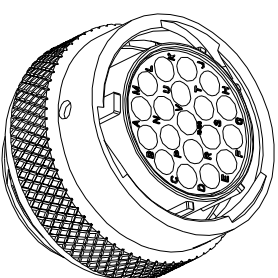
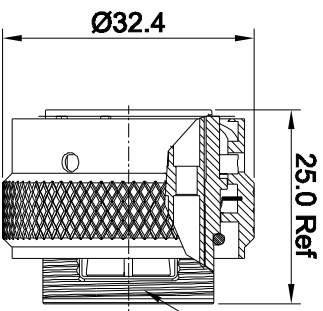
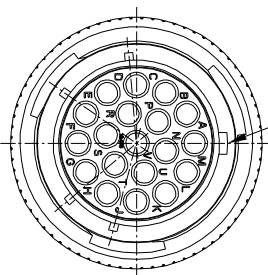


REVISIONS				
REV	ECO	DESCRIPTION	DATE	BY APPR
B1	-	RELEASED DRAWING	Nov-23-2014	Ben Tommy

MATER KEYWAY



NOTES : (UNLESS OTHERWISE SPECIFIED)

- MATERIAL :
SHELL : ZINC ALLOY , NICKEL PLATED.
INSERT : THERMOPLASTIC , UL94 V-0.
COUPLING NUT : AL ALLOY, NICKEL PLATED.
O-RING : NBR/SILICONE RUBBER.
WAVE WASHER : STAINLESS STEEL.
- SPECIFICATIONS :
2.1 RATED CURRENT : 13A (MAX).
2.2 RATED VOLTAGE : 300V (AC/DC).
2.3 OPERATING TEMPERATURE : SEE CHART.
2.4 DIELECTRIC WITHSTANDING VOLTAGE : LESS THAN 2 MILLAMPS CURRENT LEAKAGE@2000 VOLTS AC.
2.5 INSULATION RESISTANCE : 5000 MEGOHMS MIN.
2.6 IP--CLASS : IP67.
2.7 MATING CYCLES DURABILITY : 500 CYCLES MIN.
2.8 ROHS COMPLAINT.
- SUITABLE CONTACTS : 16# CONTACTS.
- ALL DIMENSIONS ARE FOR REFERENCE USE ONLY.

KEY POS	PART NUMBER	
	-40°C ~ 105°C	-40°C ~ 125°C
N	RT061619SNH	RT061619SNH03
W	RT061619SWH	RT061619SWH03
X	RT061619SXH	RT061619SXH03
Y	RT061619SYH	RT061619SYH03
Z	RT061619SZH	RT061619SZH03

QUANTITY	SEE PART NUMBER CHART	DESCRIPTION	ITEM
PART NUMBER			

MATERIALS LIST

UNLESS OTHERWISE SPECIFIED	SIGNATURES	DATE
1) ALL DIMENSIONS ARE IN MILLIMETERS. 2) TOLERANCES ARE AS SHOWN. 3) REF. DIMS. AS SHOWN. 4) HOLE REFERENCE = Δ	DRAWN: Ben CHECKED: [Signature] ENGINEER: [Signature] APPROVAL: [Signature]	10/16/2011

PROCESS SPECIFICATIONS:	THIS DRAWING IS CONTROLLED BY THE DRAWING OFFICE. ALL REVISIONS AND PERFORMANCE DATA MUST BE APPROVED BY THE DRAWING OFFICE. THE DRAWING OFFICE IS NOT RESPONSIBLE FOR REPRODUCTION ERRORS. ALL MANUFACTURING VARIATIONS ARE TO BE REPORTED TO THE DRAWING OFFICE.
MATERIAL SPECIFICATIONS:	CUSTOMER:

SCALE: NONE	SIZE: B	TYPE: C-	DWG NO: RT061619S*H	REVISION: B1
			ECO-MATE PLUG, SIZE 16, 19POS, SOCKET.	

Amphenol
Sine Systems - www.amphenol-sine.com
44724 Morley Drive
Clinton Township, MI 48038