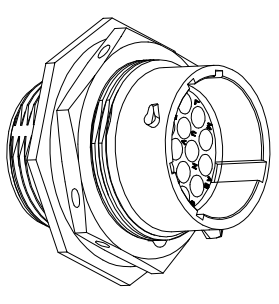
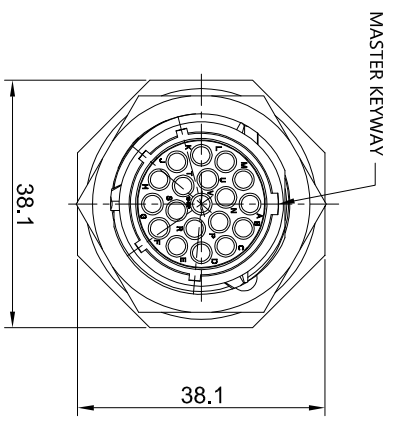
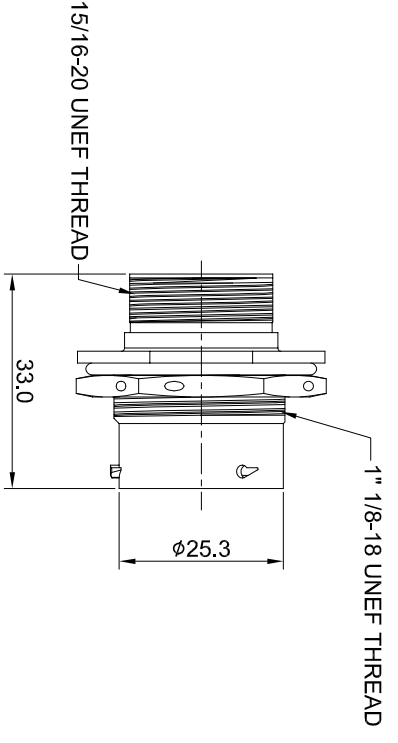
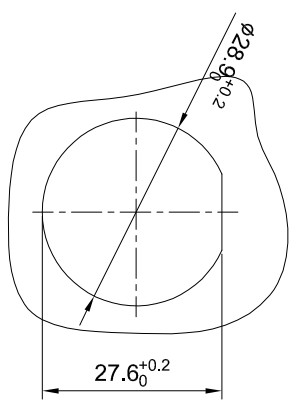


REVISIONS					
REV	ECO	DESCRIPTION	DATE	BY	APPR
B1	-	RELEASED DRAWING	July-18-2014	Ben	Tommy
B2	-	MODIFY THE INSERT LETTER LOCATION	Apr-1-2017	Ben	Tommy



NOTES : (UNLESS OTHERWISE SPECIFICATION)
 1. MATERIAL :

- SHELL : ZINC ALLOY , NICKEL PLATED.
 - INSERT : THERMOPLASTIC , UI94 V-0.
 - O-RING : NBR/SILICONE RUBBER.
 - SEAL GASKET : NBR/SILICONE RUBBER.
 - NUTS : AL ALLOY , NICKEL PLATED.
2. SPECIFICATIONS :
- 2.1 RATED CURRENT : 13A (MAX).
 - 2.2 RATED VOLTAGE : 300V(AC/DC).
 - 2.3 OPERATING TEMPERATURE : SEE CHART.
 - 2.4 DIELECTRIC WITHSTANDING VOLTAGE : LESS THAN 2 MILLIAMPS CURRENT LEAKAGE@2000 VOLTS AC.
 - 2.5 INSULATION RESISTANCE : 5000 MEGOHMS MIN.
 - 2.6 IP--CLASS : IP67.
 - 2.7 MATING CYCLES DURABILITY : 500 CYCLES MIN.
 - 2.8 ROHS COMPLIANT.
3. SUITABLE CONTACTS : 16# CONTACTS.
4. ALL DIMENSIONS ARE FOR REFERENCE USE ONLY.



KEY POS	PART NUMBER	-40°C ~ 105°C	-40°C ~ 125°C
N	RT071619PN	RT071619PN03	
W	RT071619PW	RT071619PW03	
X	RT071619PX	RT071619PX03	
Y	RT071619PY	RT071619PY03	
Z	RT071619PZ	RT071619PZ03	

QUANTITY	SEE PART NUMBER CHART	PART NUMBER	DESCRIPTION	ITEM

UNLESS OTHERWISE SPECIFIED		MATERIALS LIST	
1) All dimensions are in millimeters.	DRAWN: Ben	DATE: Apr-1-2017	<p>Amphenol</p> <p>Sine Systems - www.amphenol-sine.com</p> <p>44724 Morley Drive</p> <p>Clinton Township, MI 48038</p>
2) Tolerances are as follows:	CHECKED:	ENGINEER:	
1 PL DEC 2010 Fractions ±1/64	APPROVAL:	CUSTOMER:	
3 PL DEC 2008 Angles ±1°			<p>ECO-MATE RECEPTACLE JAM NUT, SIZE 16, 19 POS. PIN.</p>

PROCESS SPECIFICATIONS:	THIS DRAWING IS SUPPLIED FOR YOUR INFORMATION ONLY. IT IS NOT TO BE USED FOR REPRODUCTION OR REPRODUCTION OF DIMENSIONS ARE SUBJECT TO NORMAL MANUFACTURING VARIATIONS.	SIZE	TYPE	DWG NO.	REVISION
NEXT ASSY:		B	C-	RT071619P**	B2
		SCALE: NONE			SHEET 1 OF 1