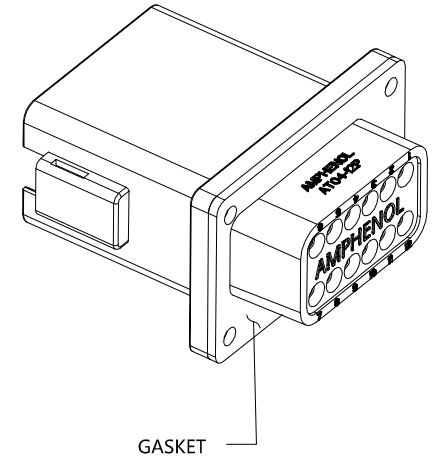
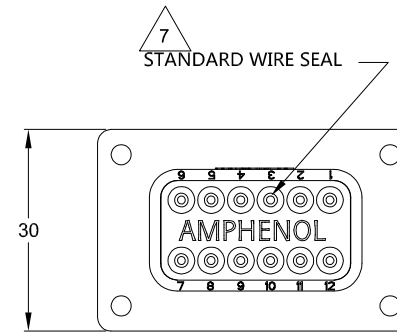
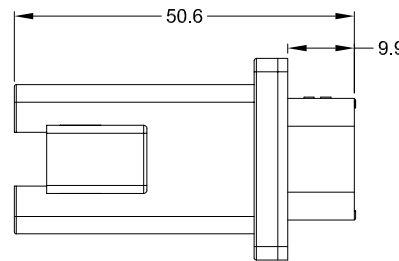
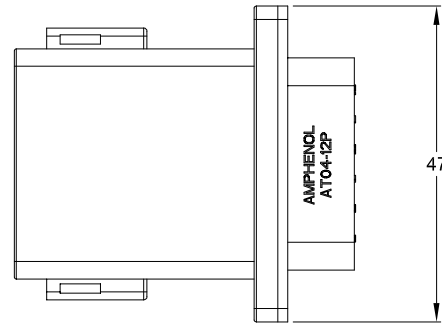
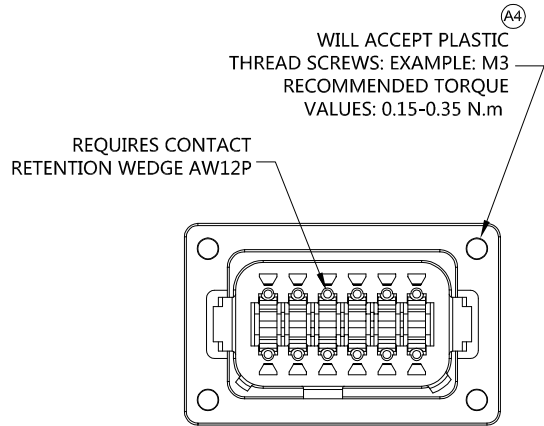


REVISIONS					
REV	ECO	DESCRIPTION	DATE	BY	APPR
A3	-	RELEASE NEW DRAWING FORMAT	03JAN14	JARRY	-
A4	-	ADD TORQUE REQUEST	10OCT15	SULLEN	TOMMY
A5	C0628S	ADD KEY C,D	01MAR17	JONY	TOMMY

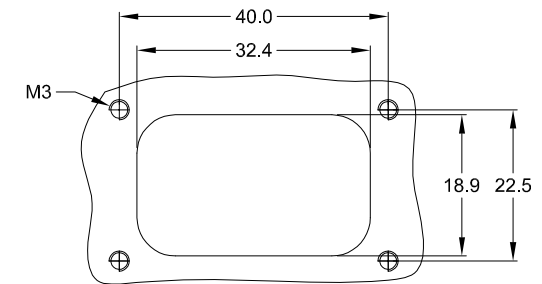


NOTES: UNLESS OTHERWISE SPECIFIED

- SEE SHEET 2 FOR KEY ARRANGEMENTS AND COLORS.
- MATERIAL:
HOUSING: THERMOPLASTIC
SEAL: SILICONE RUBBER
- MODIFICATIONS: FLANGE, STANDARD DIAMETER WIRE SEAL
- SPECIFICATIONS:
4.1 CURRENT RATING: 13 AMPS
4.2 OPERATING TEMPERATURE: -55°C TO +125°C
4.3 DIELECTRIC WITHSTANDING VOLTAGE: LESS THAN 2 MILLIAMPS CURRENT LEAKAGE @ 1500 VOLTS AC.
4.4 INSULATION RESISTANCE: 1000 MEGOHMS MIN @ 25°C.
4.5 MOISTURE RESISTANCE: IP67 (MATED CONDITION)
4.6 MATING CYCLE DURABILITY: 100 CYCLES
4.7 ROHS COMPLIANT
- MATING PART: AT06-12SX* PLUG
(X = A,B,C,D KEYS; * = MODIFICATIONS AND COLORS)
- ALL DIMENSIONS ARE FOR REFERENCE USE ONLY.

7 CONTACT SIZE AND REAR SEAL WIRE RANGE:

CONTACT SIZE	MIN. INSUL O.D.	MAX. INSUL O.D.	TYPICAL WIRE RANGE
16	2.24 mm (.088 in)	3.68 mm (.145 in)	14 - 20 AWG



RECOMMENDED PANEL CUTOUT

SEE SHEET 2		DESCRIPTION		ITEM
QUANTITY	PART NUMBER	DESCRIPTION		ITEM
MATERIALS LIST				
UNLESS OTHERWISE SPECIFIED		SIGNATURES		DATE
1) All dimensions are in metric (mm).		DRAWN: Jony		01MAR17
2) Tolerances are as follows:		CHECKED: Orion		01MAR17
1 PL DEC ±0.30		ENGINEER:		
2 PL DEC ±0.15		APPROVAL: Tommy		01MAR17
3 PL DEC ±0.08		CUSTOMER:		
3) Note reference = \triangle		THIS DRAWING IS SUPPLIED FOR INFORMATION ONLY. DESIGN FEATURES, SPECIFICATIONS AND PERFORMANCE DATA SHOWN HEREON ARE THE PROPERTY OF THE AMPHENOL CORPORATION. NO RIGHTS OF REPRODUCTION ARE IMPLIED. ALL DIMENSIONS ARE SUBJECT TO NORMAL MANUFACTURING VARIATIONS.		
MATERIAL SPECIFICATIONS:		SIZE		TYPE
PROCESS SPECIFICATIONS:		DWG NO:		REVISION
NEXT ASSY:		SCALE: NONE		
		B C-		A5
		AT04-12PX-PM01		
		SHEET 1 OF 2		

TITLE: RECEPTACLE, 12 PIN, FLANGE, KEYED, AT SERIES
DWG NO: AT04-12PX-PM01
REV: A5
SH: 1
OF: 2

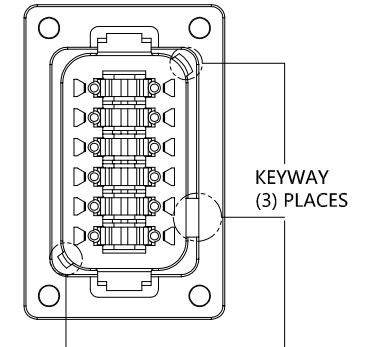
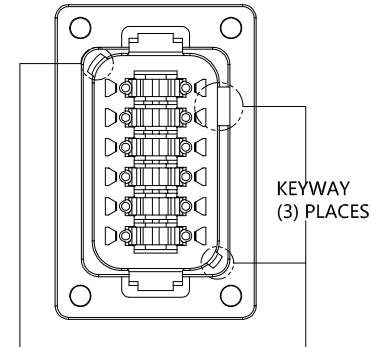
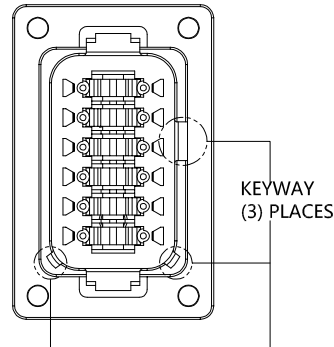
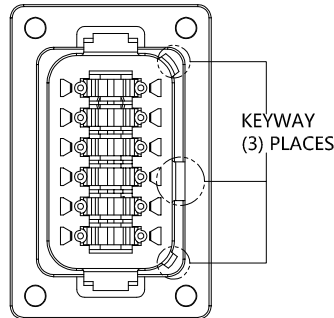
REVISIONS					
REV	ECO	DESCRIPTION	DATE	BY	APPR
A3	-	RELEASE NEW DRAWING FORMAT	03JAN14	JARRY	-
A4	-	ADD TORQUE REQUEST	10OCT15	SULLEN	TOMMY
A5	C0628S	ADD KEY C,D	01MAR17	JONY	TOMMY

P/N AT04-12PA-PM01
KEY-A CONFIGURATION
STANDARD COLOR: GREY

P/N AT04-12PB-PM01
KEY-B CONFIGURATION
STANDARD COLOR: BLACK

P/N AT04-12PC-PM01
KEY-C CONFIGURATION
STANDARD COLOR: GREEN

P/N AT04-12PD-PM01
KEY-D CONFIGURATION
STANDARD COLOR: BROWN



KEY-A CONFIGURATION	
COLOR	PART NUMBER
GREY	AT04-12PA-PM01

KEY-B CONFIGURATION	
COLOR	PART NUMBER
BLACK	AT04-12PB-PM01

KEY-C CONFIGURATION	
COLOR	PART NUMBER
GREEN	AT04-12PC-PM01

KEY-D CONFIGURATION	
COLOR	PART NUMBER
BROWN	AT04-12PD-PM01

NOTE:

AN ASTERISKS (*) PLACED BEFORE THE COLOR DENOTES THE STANDARD MOLDED COLOR OF THE CONNECTORS SHOWN ABOVE.

OTHER COLORS SHOWN ARE AVAILABLE VIA SPECIAL ORDER.

TITLE: RECEPTACLE, 12 PIN, FLANGE, KEYPED, AT SERIES
DWG NO: AT04-12PX-PM01
REV: A5
SH: 2
OF: 2

QUANTITY	PART NUMBER	DESCRIPTION	ITEM												
MATERIALS LIST															
<small>UNLESS OTHERWISE SPECIFIED</small> 1) All dimensions are in metric(mm). 2) Tolerances are as follows: 1 PL DEC ±0.30 Fractions ±1/64 2 PL DEC ±0.15 Angles ±1° 3 PL DEC ±0.08 3) Note reference = Δ		<table border="1"> <thead> <tr> <th>SIGNATURES</th> <th>DATE</th> </tr> </thead> <tbody> <tr> <td>DRAWN: Jony</td> <td>01MAR17</td> </tr> <tr> <td>CHECKED: Orion</td> <td>01MAR17</td> </tr> <tr> <td>ENGINEER:</td> <td></td> </tr> <tr> <td>APPROVAL: Tommy</td> <td>01MAR17</td> </tr> <tr> <td>CUSTOMER:</td> <td></td> </tr> </tbody> </table>		SIGNATURES	DATE	DRAWN: Jony	01MAR17	CHECKED: Orion	01MAR17	ENGINEER:		APPROVAL: Tommy	01MAR17	CUSTOMER:	
SIGNATURES	DATE														
DRAWN: Jony	01MAR17														
CHECKED: Orion	01MAR17														
ENGINEER:															
APPROVAL: Tommy	01MAR17														
CUSTOMER:															
MATERIAL SPECIFICATIONS:		<div style="font-size: 2em; font-weight: bold; margin-bottom: 10px;">Amphenol</div> Sine Systems - www.amphenol-sine.com 44724 Morley Drive Clinton Township, MI 48036 RECEPTACLE, 12 PIN, FLANGE, KEYED, AT SERIES													
PROCESS SPECIFICATIONS:															
NEXT ASSY:															
		<table border="1"> <tr> <td>SIZE: B C-</td> <td>DWG NO: AT04-12PX-PM01</td> <td>REVISION: A5</td> </tr> <tr> <td>SCALE: NONE</td> <td colspan="2">SHEET 2 OF 2</td> </tr> </table>	SIZE: B C-	DWG NO: AT04-12PX-PM01	REVISION: A5	SCALE: NONE	SHEET 2 OF 2								
SIZE: B C-	DWG NO: AT04-12PX-PM01	REVISION: A5													
SCALE: NONE	SHEET 2 OF 2														